

MartiAutoWorks
www.martiauto.com
12007 W. PEORIA AVENUE
EL MIRAGE, AZ 85335
(623) 935-2558
(623) 935-2579 Fax

DELUXE MARTI REPORT



Proud to display this symbol

Copyright Kevin Marti 2014

Thank you for your interest in our services. We have determined the following information for your car from the Ford Database we have:

VEHICLE ORDER IMAGE

12345678901234567890123456789012345678901234567890123456789012345678901234567890
8T01S199227 I 6A 29D2594 0580 DE 6U3 E 3 1A 2 D3 7 0924 AS 26 4

DOOR DATA PLATE INFORMATION

Serial Number 8T01S199227

8 1968

T Built at Metuchen

01 Mustang Hardtop

S 390-4V Engine

99227th Ford vehicle scheduled for production at Metuchen

65B Mustang Hardtop

I Lime Gold Paint, Ford #2041-A

6A Black Décor Bucket Seats

29D Scheduled For Build: April 29, 1968

920580 Export Ordering District Under Special Order
#0580

G 3.25 Limited Slip Rear Axle

U C-6 Select Shift Cruise-O-Matic

ORDER TYPE

DSO ITEM #: 2594

DEALER#: 9S0H00

FORD MOTOR COMPANY FIGESO

153 HALSEY ST

NEWARK NJ 07100

Your vehicle was ordered with the following features:

GT Equipment Group

C-6 Select Shift Cruise-O-Matic

Locking Differential

Convenience Control Panel

Visibility Group

Louvered Hood

Console

Power Disc Brakes

Power Steering

AM Radio

Interior Decor Group

Front Seat Headrests

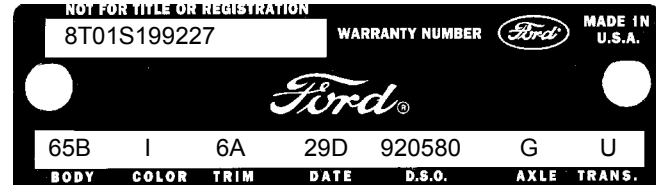
Tachometer and Trip Odometer

Accessory Packaging

Touch-Up Paint

Your car was actually produced on May 2, 1968 -- three days behind schedule.

Kevin Marti



IMPORTANT DATES:

ORDER RECEIVED: --
CAR SERIALIZED: 04/09/68
BUCKED: 04/29/68
SCHEDULED FOR BUILD: 04/29/68
ACTUALLY BUILT: 05/02/68
RELEASED: 05/13/68
SOLD: --

STATISTICS

Your car was one of:

34,587 With this Paint Code
407 With these Paint/Trim Codes
1,343 With these Engine/Transmission Codes
724 Ordered from this DSO
4,766 With GT Equipment Group

For the 1968 Mustang Hardtop.